



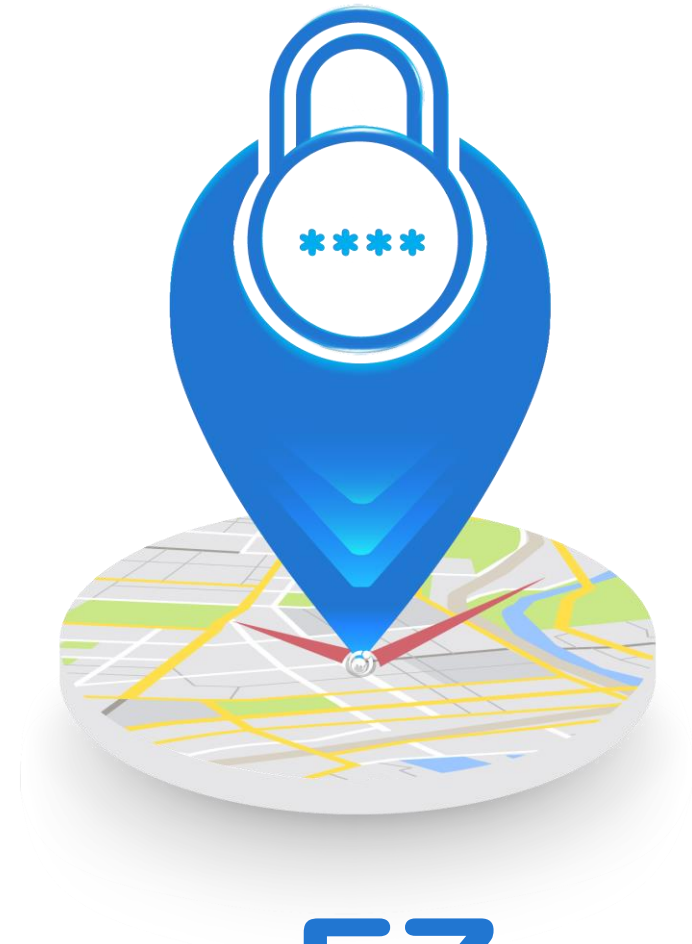
A step towards rural transformation

EASY ATTENANCE

Student App

User Manual

<https://appstore.dfindia.org>



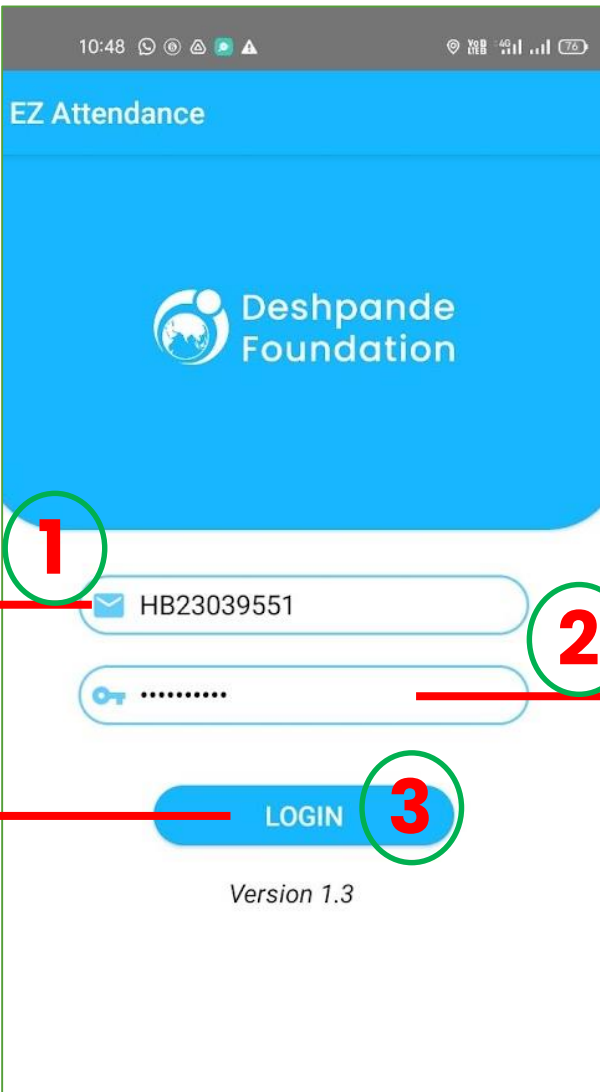
EZ

ATTENDANCE

Student Prerequisites :

1. Minimum Android Version 5.0
2. Minimum Storage 250 MB.
3. Minimum 2 GB RAM
4. Good Internet bandwidth Must be available
5. Student should have their own mobile number. Not to use Parents/Guardian mobile number

- Enter your Application number as user name and Camu registered mobile number as password to login.



The image shows a mobile app interface for 'EZ Attendance' by Deshpande Foundation. It features a blue header with the app name and logo. Below the header, there are two input fields: one for the Application Number (containing 'HB23039551') and one for the password (masked with dots). A blue 'LOGIN' button is positioned below the password field. Three numbered red circles with arrows point to these elements: 1 points to the Application Number field, 2 points to the password field, and 3 points to the LOGIN button. External text boxes provide instructions for each step.

1 Enter your Application Number

2 Enter your mobile no. which is updated in Camu

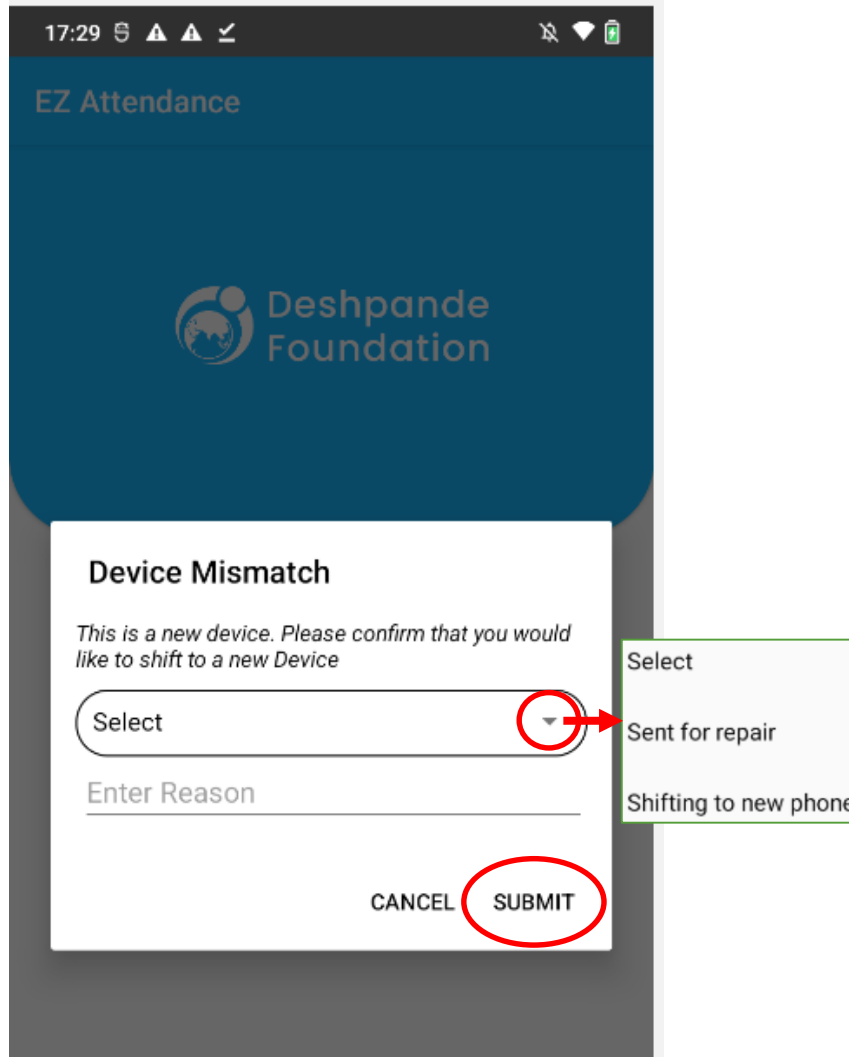
3 Click here to login

Version 1.3

NEW DEVICE / DEVICE MISMATCH

- If you trying to login with another student credentials, the application will not allow to login.
- If you are trying to login with new device, the application will ask for a reason to select. Select & Enter the reason and Submit.

1. If you are trying to login to New Device, select & enter the reason & Submit.
2. Once you login to new device, you cannot login to your old device again.



17:29

EZ Attendance

Deshpande Foundation

Device Mismatch

This is a new device. Please confirm that you would like to shift to a new Device

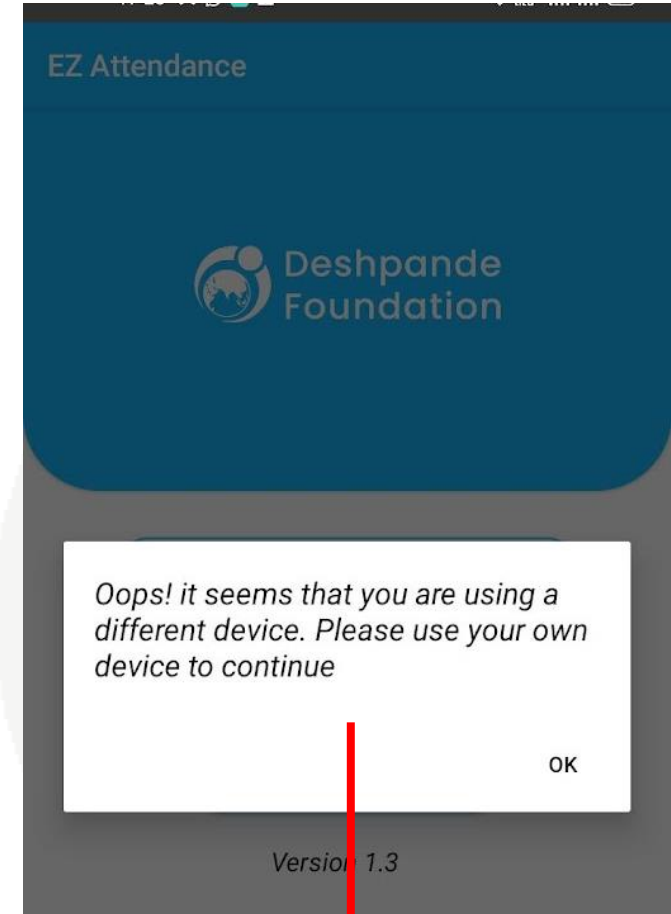
Select

Enter Reason

CANCEL SUBMIT

Select

- Sent for repair
- Shifting to new phone



EZ Attendance

Deshpande Foundation

Oops! it seems that you are using a different device. Please use your own device to continue

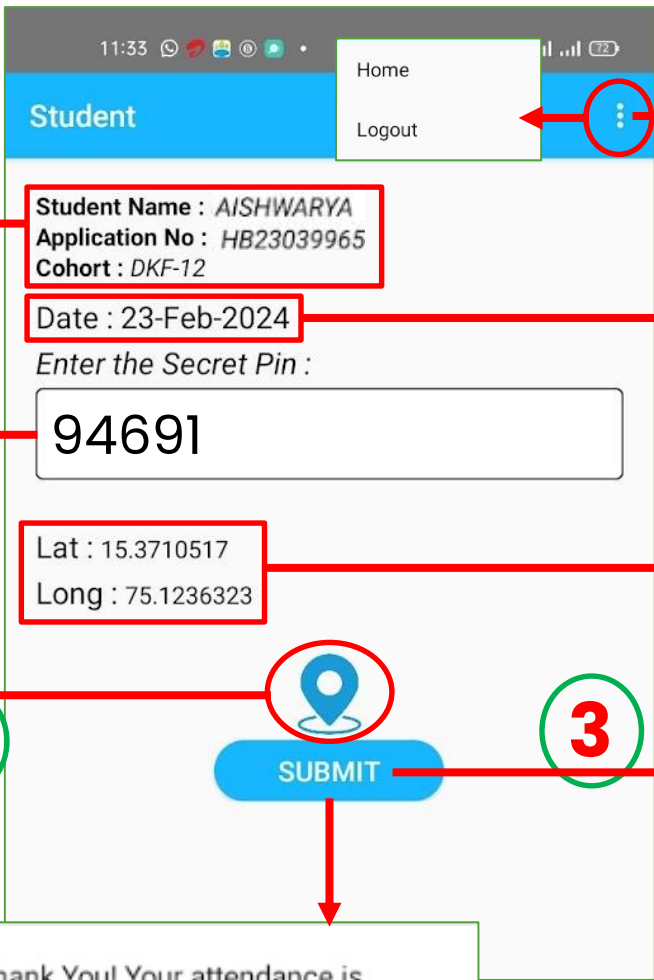
OK

Version 1.3

Once you login with your credentials, the app will not allow to login with another student credentials

PUNCH IN ATTENDANCE

- Click on the current location icon and enter the OTP provided by the Trainer and Submit to capture the attendance.

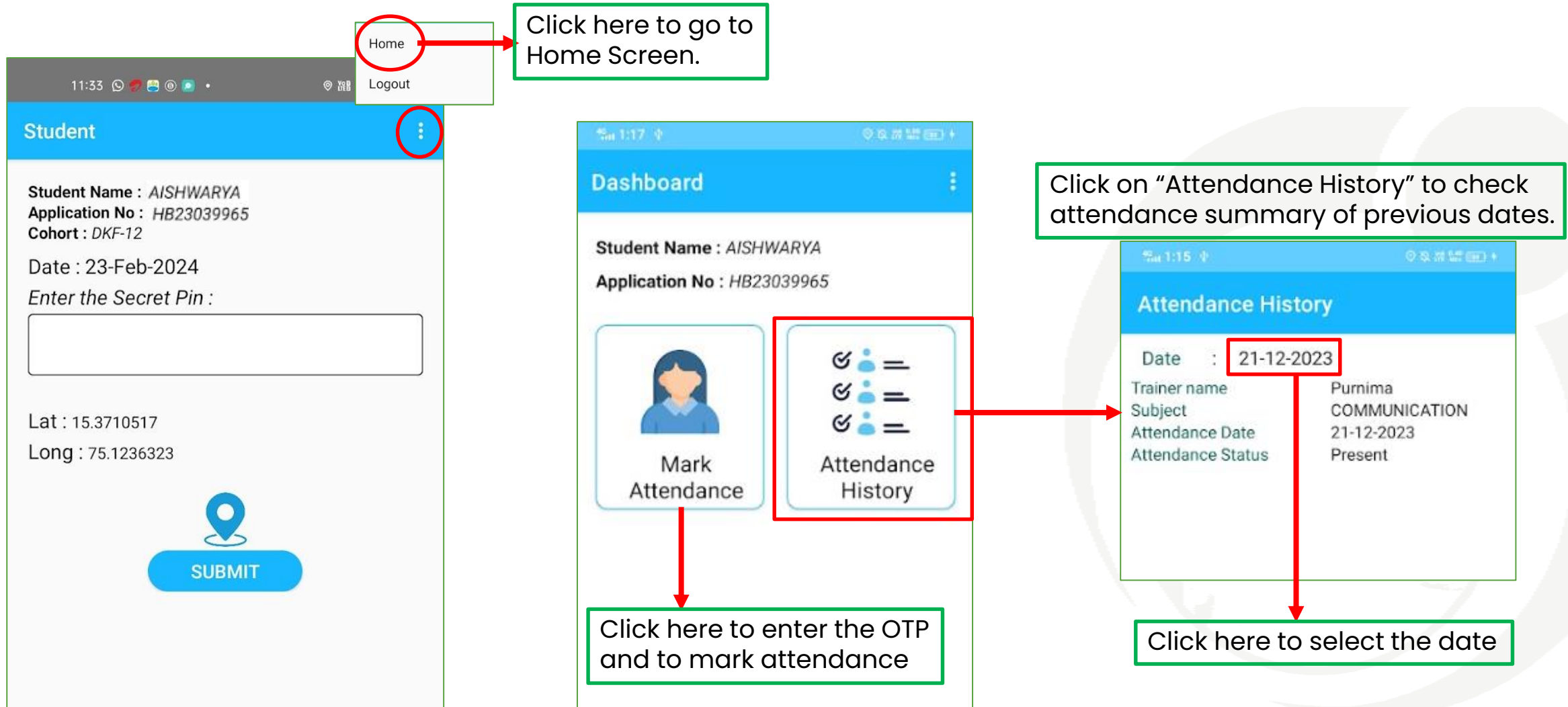


The screenshot shows the 'Student' app interface with the following elements and annotations:

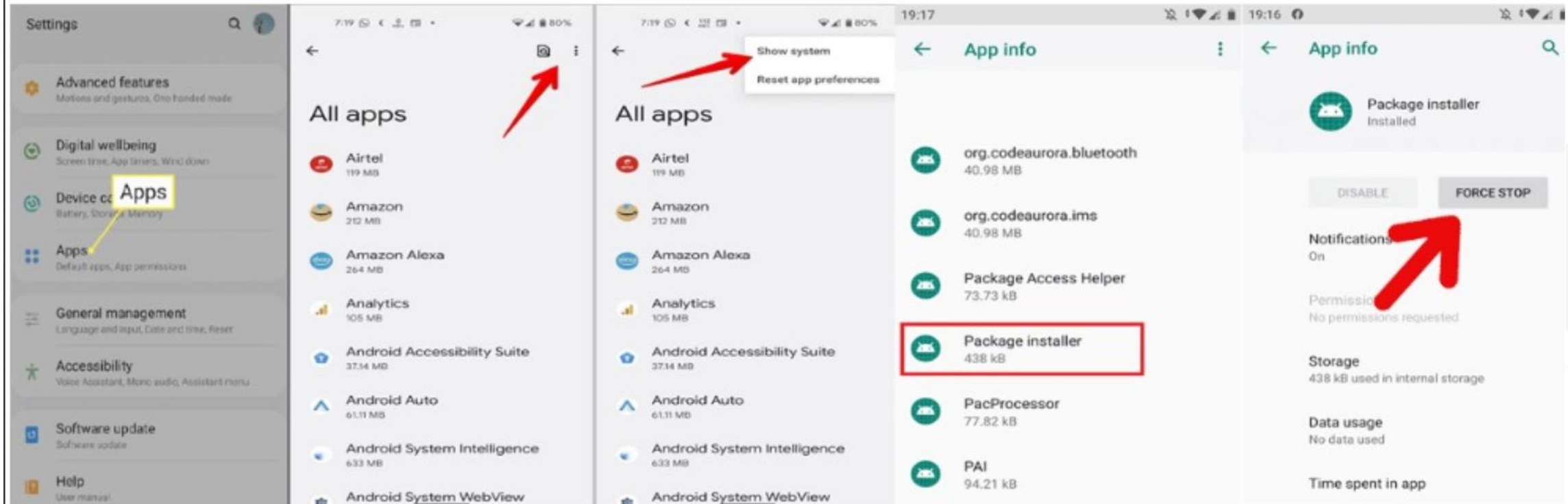
- Top Bar:** 'Student' title, 'Home' and 'Logout' buttons. A red circle with a vertical ellipsis icon is annotated with 'Click here to go to Home Screen or to Logout'.
- Student Information:** 'Student Name : AISHWARYA', 'Application No : HB23039965', 'Cohort : DKF-12'. An annotation points to this section: 'Student Name, Application No. Cohort assigned'.
- Date:** 'Date : 23-Feb-2024'. An annotation points to this: 'Default current date'.
- OTP Entry:** 'Enter the Secret Pin : 94691'. A red circle with the number '2' is next to the input field, annotated with 'Enter the OTP received from the Trainer'.
- Location:** 'Lat : 15.3710517', 'Long : 75.1236323'. An annotation points to this: 'Student current location Lat & Long'.
- Location Icon:** A blue location pin icon is circled in red, annotated with 'Click here to fetch your current location' and a red circle with the number '1'.
- Submit Button:** A blue 'SUBMIT' button is circled in red, annotated with 'Click here to Submit the attendance' and a red circle with the number '3'.
- Success Message:** 'Thank You! Your attendance is marked Successfully' with an 'OK' button. An annotation points to this: 'If the OTP is Valid and entered within time, within the location, the attendance will capture successfully'.

ATTENDANCE SUMMARY

- Click on Home, Click on Attendance History and Select the date to get the attendance summary.



1. Package Installer Has Stopped Issue



2. Package Installer Has Stopped Issue

